

# CHARLIE COMPANY

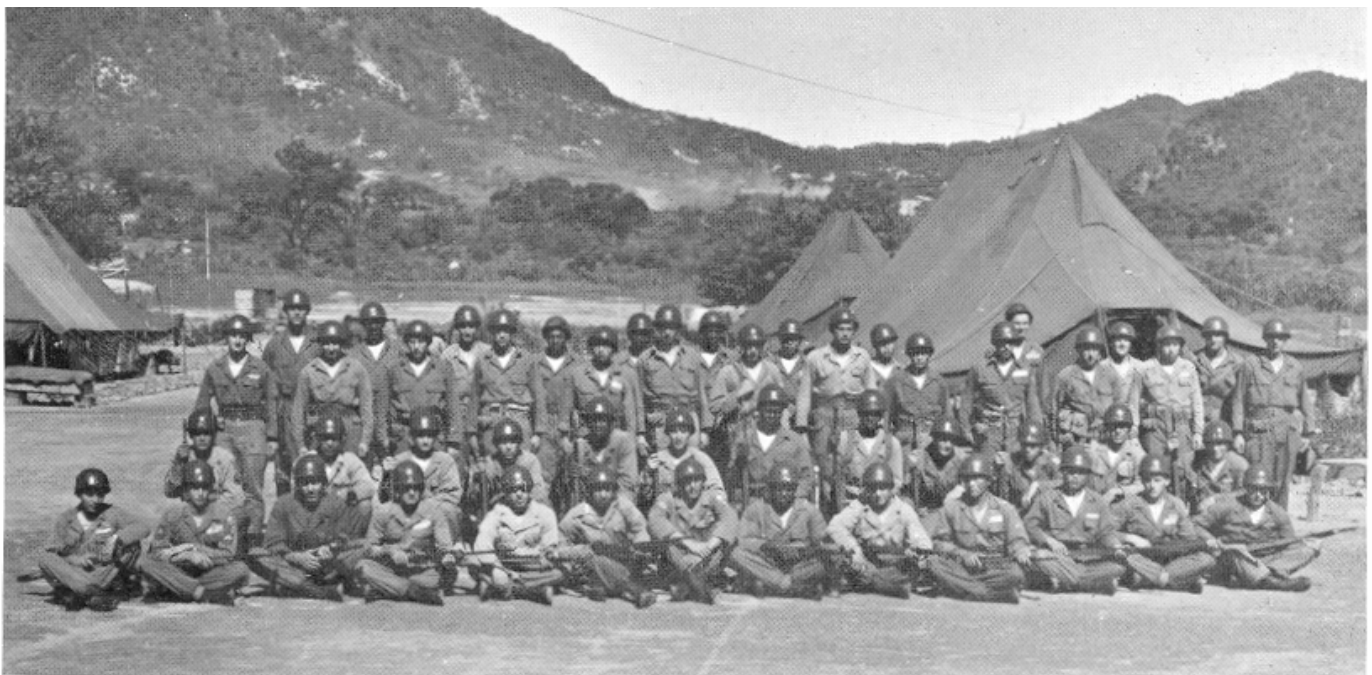
## CHARLIE COMPANY Headquarters Section

**Left Side, Front Row:** Sgt Jennings; Sfc Callahan; Pfc Stich; Cpl Baumann; Cpl Van Dusen  
**Left Side, Rear Row:** Pfc Logan; Sgt Takeda; Sgt Robertson, Sgt Whitehead  
**Right Side, Front Row:** Pfc Palmer; Cpl Estes; Sgt Sheehan; Pfc Neely  
**Right Side, Rear Row:** Sgt Ecker; Pfc Kenney; Cpl Polk; Pfc Lawrence; Sfc Ringo  
**Center:** Lt Mediavilla; Lt Williams; M/Sgt Gonzales



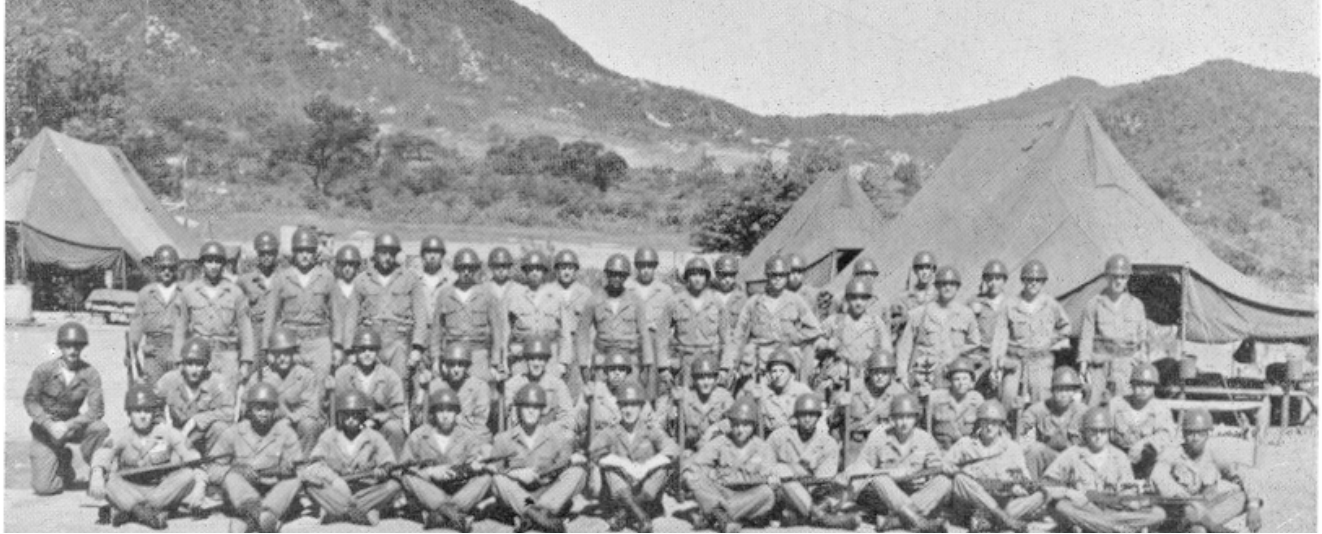
## CHARLIE COMPANY First Platoon

**1<sup>st</sup> Row L to R:** Pfc Van Nostrand; Sfc Farrell; Pfc Pflieger; Pvt Herron; Pvt Doering; Pfc Rodriques; Sfc Kadlec; Pvt Randle; Pfc Haas; Pfc Lee Young Kyu, Cpl Lee Je Sung; Cpl Heinlein; Cpl Fenstamaker  
**2<sup>nd</sup> Row:** Pvt Watkins; Pfc Garcia; Pfc Ringener; Pfc Reynolds; Cpl Olinde; Pfc Wager; Pvt Wilson; Pfc Anderson; Pfc Young; Pvt Yohe; Cpl Flinchum; Pfc McBride  
**3<sup>rd</sup> Row:** Sgt Ritter; Pvt Pflingsten; Pfc King, Pfc Fink; Cpl Pak Tong Ki; Pvt Smith; Pfc Burnsworth; Cpl Waters; Cpl Lee Ok Joon; Pfc Gigante; Pfc Tilton; Cpl Guy; Pfc Gravel  
**4<sup>th</sup> Row:** Cpl Davis; Pfc Pitts; Pfc Scott; Pvt Randolph; Pfc Parker; Pfc Randall; Cpl Yoon Sang Chun; Pfc Lee Je Ok; Pfc Howell; Pvt Clinton; Cpl D'Alessandro



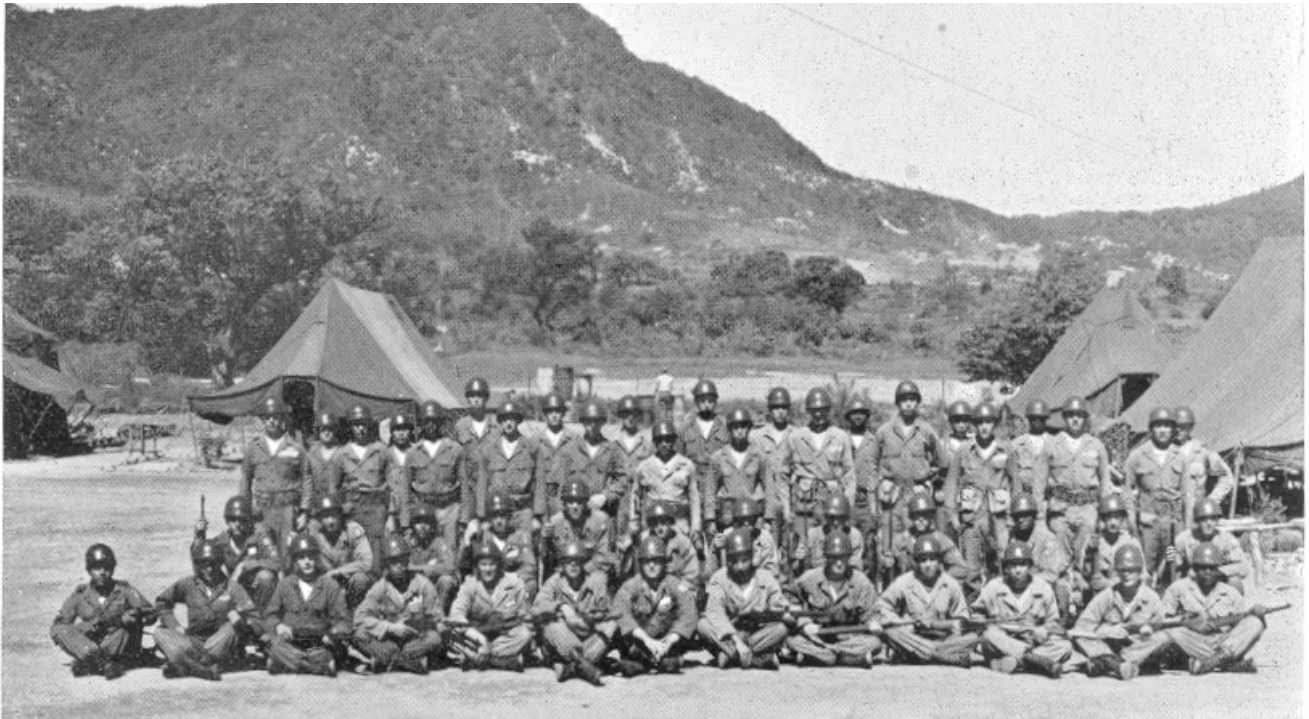
**CHARLIE COMPANY**  
Second Platoon

- 1<sup>st</sup> Row L to R:** Sfc Kelly; Pfc Russell; Pfc Newcomb; Pfc Ellingsworth; Pfc Oglesby; Lt Bridgeford; Pfc Breece; Pfc Welch; Cpl Mortenson; Pfc Zarling, Pfc Schwinn; Sgt Wright
- 2<sup>nd</sup> Row:** Sfc Bolin. Cpl Colangelo, Pfc Waugh, Pfc Walker; Pfc Ward, Pfc Corkran; Pfc Stone; Pfc Bajorek; Pfc Moore; Pfc Clinkenbeard; Pfc Mills; Cpl Kang Han Soo; Cpl Kang Dae Shik
- 3<sup>rd</sup> Row:** Sfc Rodrigues; Cpl Rowe; Pvt Gennett; Pfc Shelton, Pfc Freeman; Pfc Scott; Pfc Langlois; Pvt Murley; Pvt Perone; Cpl Clements; Sgt De Young; Pfc Hall
- 4<sup>th</sup> Row:** Sfc McGaughy; Pfc Logan; Pfc Lachance; Cpl Glidden; Pfc Mazzabufi; Cpl Roe; Cpl Peterson; Pfc Jones; Pfc Schneeberger; Pfc Walker; Pfcerreira; Pfc Zimmerman



**CHARLIE COMPANY**  
Third Platoon

- 1<sup>st</sup> Row L to R:** Sfc Montez; Sfc Wagner; Pfc Pittsley; Cpl Kwon Moon Bong; Pfc Decker; Pfc Brown; Lt Beach; Pvt Bauerle; Pfc Trumbo; Pfc Shrrder; Cpl McDow; Cpl Reichelt; Pvt Mumford
- 2<sup>nd</sup> Row:** Sgt Lee; Pvt Dechant; Pfc Delgado; Pfc Herring; Pvt Charlwood; Pfc Quinn; Pfc Waldroop; Pfc Ernst; Pfc Ecker; Pfc Landry; Pfc Doke; Cpl Siwakowski
- 3<sup>rd</sup> Row:** Sgt Calimore; Pfc Mouser; Pfc Usher; Pvt Catalano; Pfc Tannehill, Pfc Giannelli; Cpl Kim Wan Ok; Pvt Poling; Pfc Lawson; Pvt Melendez; Cpl Galloway; Sgt Contreras
- 4<sup>th</sup> Row:** Sfc Dorr; Cpl Choe Bong Yun; Pfc Thornton; Cpl Brundige; Pfc Eichhorn; Pfc Reeson; Pfc Vaughan; Pvt Green; Cpl Bang Yung Do; Cpl Oates





**CHARLIE COMPANY**  
Fourth Platoon

- 1<sup>st</sup> Row L to R:** Sgt Link; Sgt Millsaps; Pvt Brown; Pfc Yanchek; M/Sgt Dennis; Cpl Tedrow; Pfc Reynolds; Pfc Pak Won Byong; Pfc Zavala; Pfc Wegner; Sfc Fickey
- 2<sup>nd</sup> Row:** Sgt Patrick; Pfc Gochnour; Pfc Pau'u; Pfc Hulse; Pfc Peppers; Sgt Niswender; Cpl Allen; Cpl Kim Keun Shik; Cpl Hwung Soo Tong; Cpl Weyant
- 3<sup>rd</sup> Row:** Sgt Rigsby; Pfc Williamson; Pvt King; Cpl Johnson; Cpl Titsworth; Pfc Ragar; Cpl Chung Kam Chul; Pfc Colosi; Pfc Lee Hwan Sang; Sfc Davis